

Custom Reporting Whitepaper

Connecting to the OfficeMate Enterprise SQL Database

Install the MS SQL 2005 Client

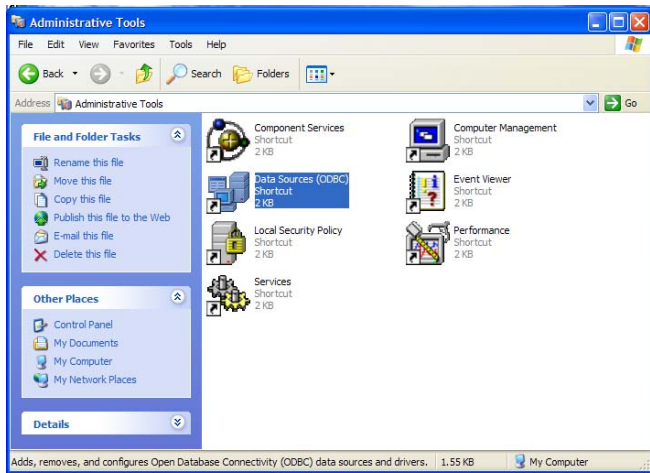
To ensure a proper connection to the OME SQL 2005 database, it is highly recommended that the following MS SQL 2005 client be downloaded & installed on all workstations used for custom reporting:

<http://download.microsoft.com/download/4/4/D/44DBDE61-B385-4FC2-A67D-48053B8F9FAD/sqlncli.msi>

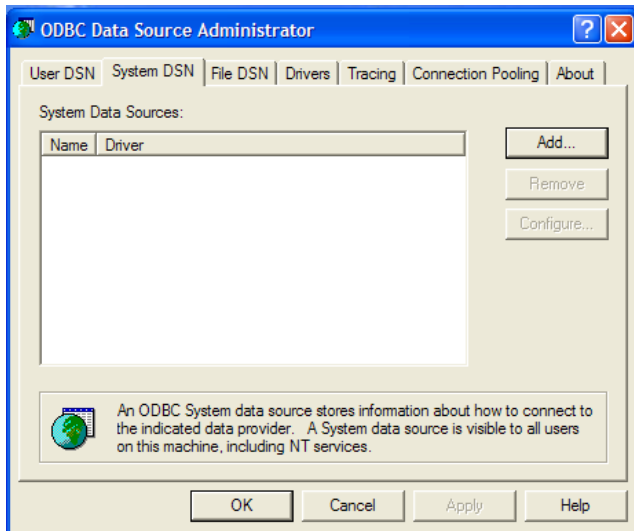
Create an ODBC Data Source connection

To use the OME database, an ODBC connection needs to be established. Please note that this process varies slightly between Windows 2000, Windows XP, and Windows Vista. The following tracks the steps for Windows XP:

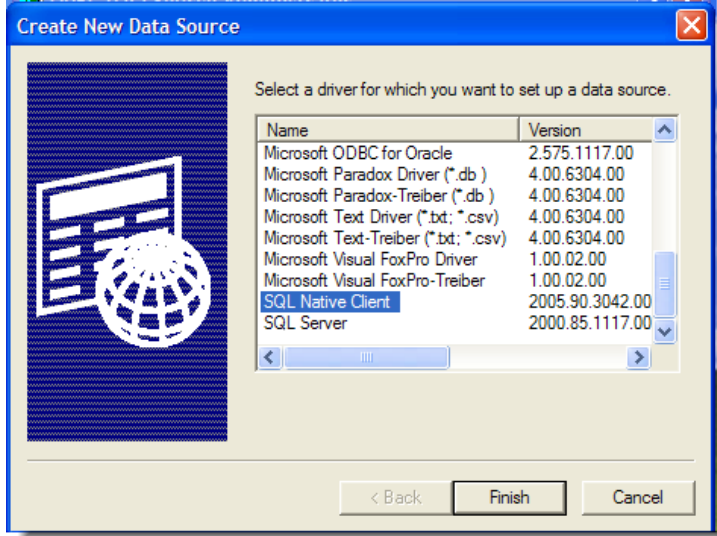
- Navigate to 'Start/Control Panel/Performance and Maintenance/Administrative Tools/Data Sources (ODBC)'



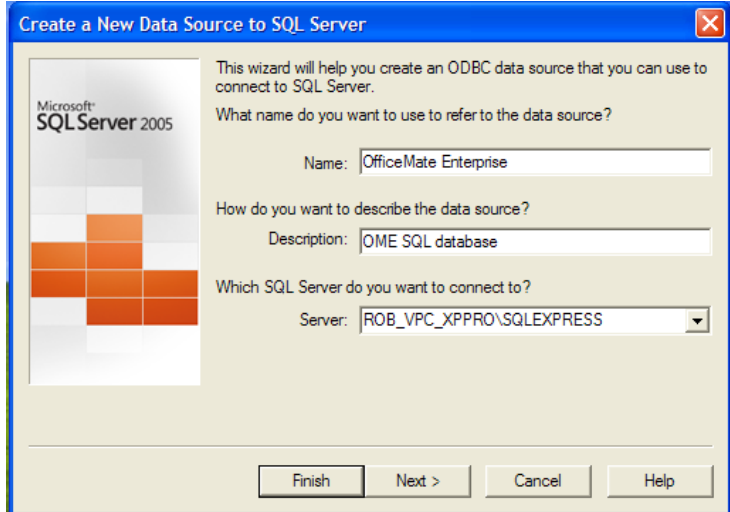
Select the 'System DSN' tab, then click on the 'Add...' button to add a new connection.



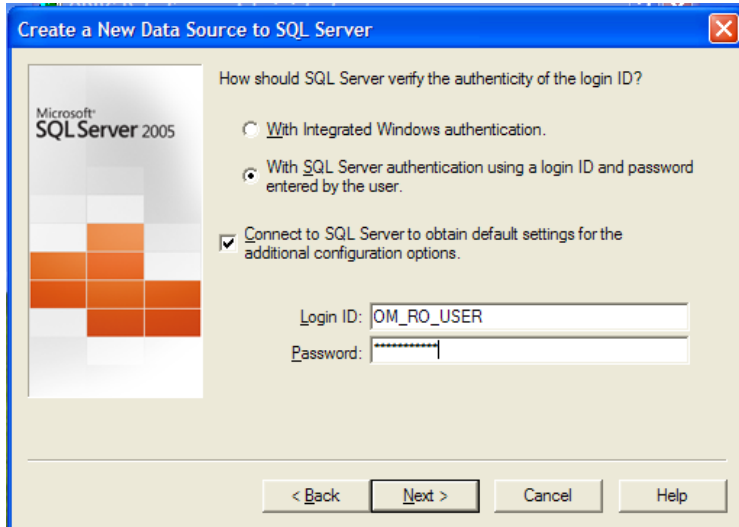
- Next, select the 'SQL Native Client' driver, then click 'Finish'.



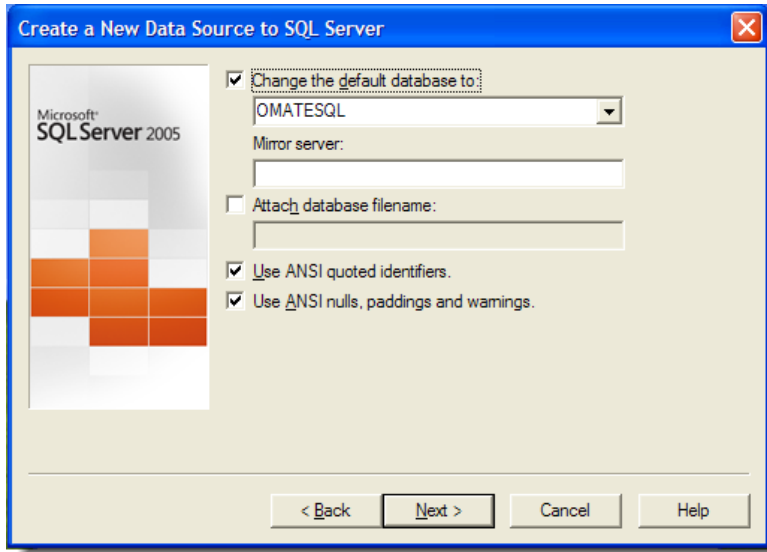
- Next, fill in the 'Name' & 'Description' fields, then place the full name of your server (if uncertain, ask your System Admin) into the 'Server' field, or click on the down arrow to search for the server. Then click 'Next'.



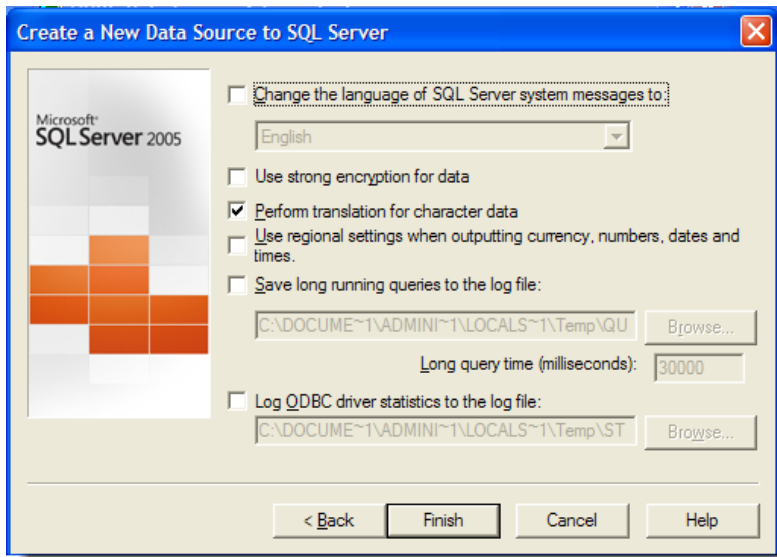
- Next, select the 'SQL Server Authentication' option and enter in the 'Username' & 'Password' of 'OM_RO_USER' & '0SSSQL@2007'. The password is case-sensitive and begins with a number zero. Click 'Next'.



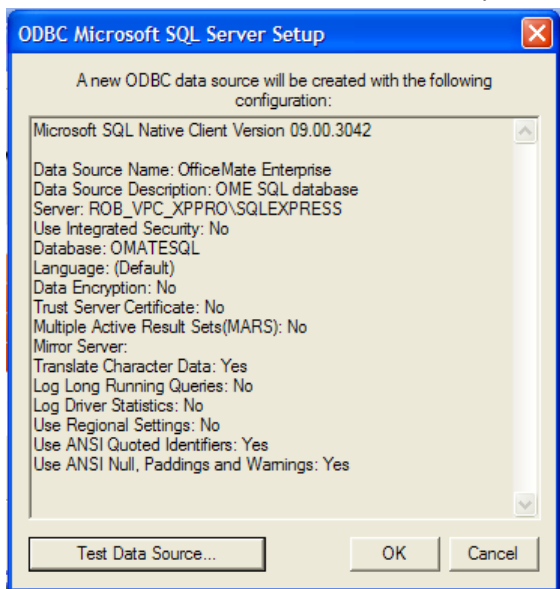
- Next, select the 'Default database' checkbox, and select the OMATESQL database. Click 'Next'.



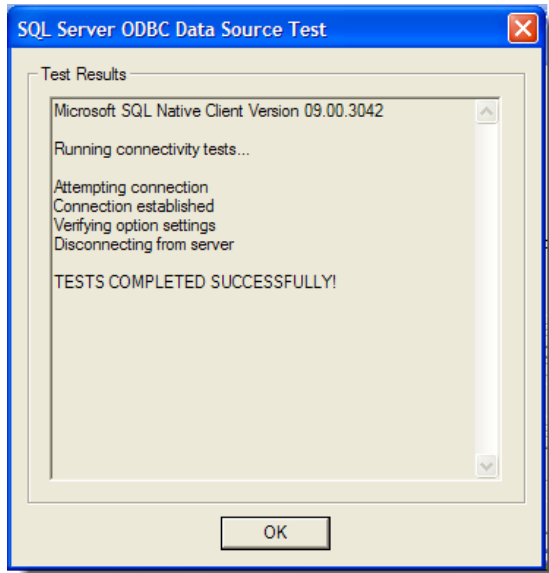
- Then click 'Finish'.



- You can then test the new connection by clicking on 'Test Data Source...'



After which you will see the following if the connection is established. Click OK, then OK again to finish.



Use the ODBC connection with your chosen reporting tool

The ODBC database connection can now be used by a variety of reporting tools such as:

- Crystal Reports
- MS Access
- MS Excel
- MS Word
- LogiXML Reporting

Please refer to each tool's instructions for details on reporting & usage.

OfficeMate Enterprise Table Structures

The database structure of OfficeMate Enterprise is composed of many tables, indexes, and table relationships. The following summarizes some of the major tables and table relationships.

Table Name	Notes
Patient	Basic Patient Demographic info, relates to tables: Address table for common family address, eDocuments for electronic documents, Patient_Insurances for insurance coverage
Patient_Recalls	Recall information, relates to tables; Patient, Recall_Type
Fee_Slip	Fee Slip transactions, relates to tables: Fee_Slip_Items, Fee_Slip_Items_Trans. The field Fee_Slip_Items_Trans.itmtrn_type_no is the transaction type, whose list is found in the Code table where Code.code_category_cd = 15. The field Fee_Slip_Items_Trans.itmtrn_pmt_adj is the payment/adjustment type of 0=Patient Payment, 1=Patient Adjustment, 2=Insurance Payment, 3=Insurance Adjustment.
AppSch_Appointments	Scheduler appointments, relates to tables: Patient,
Frame_Rx	Spectacle Rx/Orders, relates to tables: Patient, Frame_Lens_Rx for OD/OS lens, Frame_Lens_Rx_AddOn for Lens add-ons
Soft_Contact_Rx	Soft Contact Lens Rx/Orders, relates to tables: Patient, Soft_Contact_Lens_Rx for OD/OS lens
Hard_Contact_Rx	Hard Contact Lens Rx/Orders, relates to tables: Patient, Hard_Contact_Lens_Rx for OD/OS lens
EWExam	ExamWRITER exam records, relates to tables: Patient, EWExamTrans for exam components, EWPatTrans for patient Hx info, EWSpecRx for Rx info, EWMeds for medication list, EWTests for exam test info